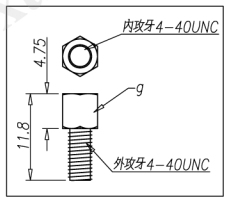
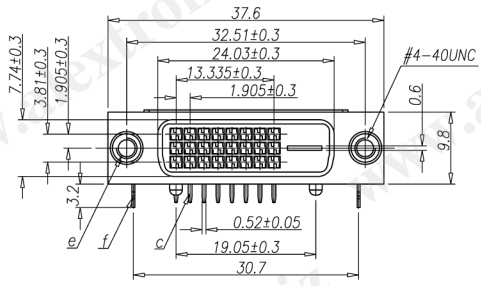


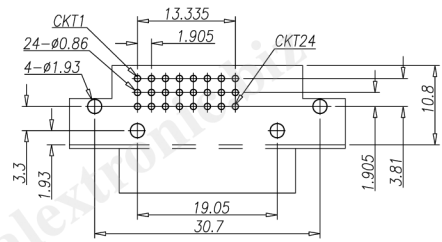
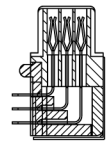
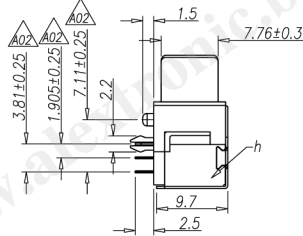
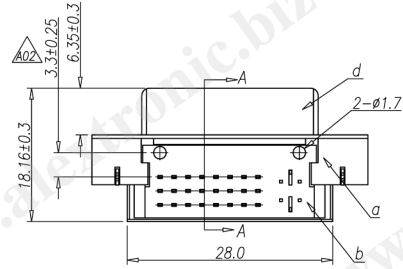
CATEGORY	DESCRIPTION	P/N #
CONNECTOR	DVI(24+0) Female, R/A, T/H	DV240F-14610-XXXX

REV.	ECN NO	DESCRIPTION	REVISED	DATE
A01		New Release	Luguan	2009.08.07
A02	ECN100112001	修改公差	Luguan	2010.01.12



SPECIFICATION:

1. Current Rating: 1.5A MIN.
2. Contact Resistance: 40mΩ MAX.
3. Insulation Resistance: 1000MΩ MIN.
4. Dielectric Withstanding Voltage: 500V AC
5. Insertion Force: 4.5Kgf MAX.
6. Extraction Force: 1.0 Kgf MIN.
7. Durability: 100 Cycles
8. Operation Temperature: -20°C~85°C



Recommend PCB Layout  
(Jack Top View)  
Tolerance: ±0.05mm  
Recommend PCB Thickness: 1.6mm

PART NO.:  
DV240F-14610-XXXX

XX	Screw Type
01	無螺絲
02	附螺絲
03	銅螺絲

See Color Scheme

Color Scheme

XX	Housing	Cover
00	Black	Black
01	White	White

h	Back Shell	1	SPCC, T=0.3mm	Ni Plating	
g	Screw	2	Copper Alloy	Ni Plating	
f	Board Lock	2	Brass, T=0.4mm	Matte Tin Plating	
e	Rivet	2	Copper Alloy	Ni Plating	
d	Front Shell	1	SPCC, T=0.5mm	Ni Plating	
c	Terminal	24	Brass, T=0.25mm	Gold Flash Plating	
b	Cover	1	PA UL94V-0	See Color Scheme	
a	Housing	1	PBT UL94V-0	See Color Scheme	
NO.	PART NAME	Q'TY	MATERIAL	PLATING & COLOR	Remark

UNLESS OTHERWISE SPECIFIED TOLERANCES

DECIMALS: X :±0.5 X.X :±2' X.XX :±0.3 X.XX :±1' X.XX :±0.2

Product Drawing  
ALEXTRONIC

SCALE: 1/1 UNIT: mm DWG. NO: W1-061-415

SIZE: A3 PAGE: 1 OF 1 REV: A02

APPROVED BY: XZQ CHECKED BY: PJ PREPARED BY: Luguan

CUSTOMER COPY